



**BOARD OF COUNTY COMMISSIONERS
WARREN COUNTY, OHIO**

406 Justice Drive, Lebanon, Ohio 45036

www.co.warren.oh.us

commissioners@co.warren.oh.us

**Telephone (513) 695-1250
(513) 261-1250
(513) 925-1250
(937) 425-1250
Facsimile (513) 695-2054**

***TOM ARISS
PAT ARNOLD SOUTH
DAVID G. YOUNG***

**BOARD OF COUNTY COMMISSIONERS
WARREN COUNTY, OHIO**

MINUTES: Regular Session – March 26, 2013

The Board met in regular session pursuant to adjournment of the March 19, 2013, meeting.

Tom Ariss - present

David G. Young - present

Pat Arnold South - present

Tina Davis, Clerk - present

Minutes of the March 19, 2013 meeting were read and approved.

- 13-0466 A resolution was adopted to amend Resolution #13-0400, approving hiring of Gregory Smith to the position of Carpenter, within the Facilities Management Department. Vote: Unanimous
- 13-0467 A resolution was adopted to authorize County Engineer to Execute LPA (Local Public Agency) Federal Local-LET Project Agreement (Agreement #25412) with the Ohio Department of Transportation (ODOT) for the High Risk Rural Roads Project (PID #94520) on various roads in Warren County. Vote: Unanimous
- 13-0468 A resolution was adopted to Transfer Vehicle Title to the Village of Harveysburg. Vote: Unanimous
- 13-0469 A resolution was adopted to Waive Fees associated with the construction of the Rachel A. Hutzler Observatory at Camp Joy in Washington Township. Vote: Unanimous
- 13-0470 A resolution was adopted to Waive Permit Fees associated with the St. Margaret of York Renovation Project. Vote: Unanimous
- 13-0471 A resolution was adopted to Waive Water Charges to 2904 Hart Road, Water Account #0201409 in the Hart Road Water Improvement Area. Vote: Unanimous

- 13-0472 A resolution was adopted to accept #3000 as payment from Teresa Isaacs for First Time Home Buyer Loan. Vote: Unanimous
- 13-0473 A resolution was adopted to accept Tax Incentive Review Council recommendation for 2012 Enterprise Zone Program. Vote: Unanimous
- 13-0474 A resolution was adopted to acknowledge payment of Bills. Vote: Unanimous
- 13-0475 A resolution was adopted to approve various Refunds. Vote: Unanimous
- 13-0476 A resolution was adopted to Affirm "Then and Now" requests pursuant to Ohio Revised Code 5705.41(D) (1). Vote: Unanimous
- 13-0477 A resolution was adopted to approve following Record Plat. Vote: Unanimous
- 13-0478 A resolution was adopted to approve Appropriation Decreases within various Funds. Vote: Unanimous
- 13-0479 A resolution was adopted to approve Cash Advance from the General Fund #101 into Domestic Preparedness Grant Fund #260. Vote: Unanimous
- 13-0480 A resolution was adopted to approve Supplemental Appropriations into Clerk of Courts Certificate of Title Administration Fund #250-1260 for Vacation and Sick Leave Payout. Vote: Unanimous
- 13-0481 A resolution was adopted to approve Supplemental Appropriation within Facilities Management Fund #494. Vote: Unanimous
- 13-0482 A resolution was adopted to approve Supplemental Appropriation within Juvenile Court Reclaim Grant Fund #247. Vote: Unanimous
- 13-0483 A resolution was adopted to approve Appropriation Adjustments within Commissioners Fund #101-1110. Vote: Unanimous
- 13-0484 A resolution was adopted to approve Appropriation Adjustments within Treasurer's Office Fund #101-1130 and Children Services Fund #273. Vote: Unanimous
- 13-0485 A resolution was adopted to authorize payment of Bills. Vote: Unanimous
- 13-0486 A resolution was adopted to hire Paul Pena as a Summer Intern for the Board of Commissioners. Vote: Unanimous
- 13-0487 A resolution was adopted to approve Appropriation Adjustment within Lebanon Municipal Court Fund #101-1272. Vote: Unanimous

- 13-0488 A resolution was adopted to Amend Resolution #13-0361, approving hiring of Brandon D. Coldiron to the position of Temporary Custodial Worker I, within the Facilities Management Department. Vote: Unanimous
- 13-0489 A resolution was adopted to Cancel regularly scheduled Commissioners' Meeting of Thursday, March 28, 2013. Vote: Unanimous
- 13-0490 A resolution was adopted to accept Amended Certificate for Sheriff's Office Fund #287 and approve Supplemental Appropriation into Sheriff's Office Fund #287. Vote: Unanimous
- 13-0491 A resolution was adopted providing for the adoption of certain procedures to be adhered to following the issuance of Tax-exempt Debt. Vote: Unanimous
- 13-0492 A resolution was adopted to approve Appropriation Adjustment within Juvenile Court Reclaim Grant Fund #247. Vote: Unanimous

DISCUSSIONS

On motion, upon unanimous call of the roll, the Board accepted and approved the consent agenda.

David McCandless, Congressman Chabot's Office, was present to announce the opening of the Lebanon Office at 11 S. Broadway and to provide the newly acquired telephone number of (513) 421-8704.

Mr. McCandless stated his desire to be accessible to the needs of Warren County government and residents.

Dr. Steven Johnson, President and CEO of Sinclair Community College, was present along with Barney Wright, Chairman of the Sinclair Community College Board of Directors, Madeline Iseli, Vice President for Advancement and Dr. Scott Markland, Vice President of Regional Centers, for a work session to give an update on Sinclair.

Dr. Johnson reviewed a PowerPoint (attached) showing the progress that has been made since Sinclair Community College first partnered with Warren County and located their Courseview Campus in Mason. He stated that Sinclair Community College is debt free and presented the master plan for the Courseview Campus.

Ms. Iseli stated that Sinclair has received a \$250,000 grant from the Bill and Melinda Gates Foundation that is helping to fund the first expansion of the Courseview Campus that is scheduled to open in the fall of 2013. She then reviewed the number of Warren County residents that are utilizing the scholarships offered by the Commissioners and requested the Board to consider continuation of the scholarship program.

Mr. Wright, Warren County's appointment to the Sinclair Community College Board of Directors and Chairman of the Board, requested the Board consider recommending a member to the Sinclair Community College Foundation Board and to also consider the continuation of the scholarship program for Warren County residents.

Upon further discussion, the Board confirmed their desire to continue the scholarship program.

Mike Yetter, Zoning Supervisor, was present along with representatives from Soil and Water Conservation, the Warren County Regional Planning Commission, Warren County GIS Department and representatives from the Rural Zoning Commission, to discuss proposed streamside setback legislation.

Pam Jones, Rural Zoning Commission member, presented and explained the proposed three zone scenario relative to a mandatory setback vs. a recommended and preferred zone.

Dawn Johnson, Director of the GIS Department, presented a PowerPoint presentation (attached) that provided a streamway model of First Creek in Harlan Township and how individual parcels would be affected by the proposed legislation.

Upon discussion, the Board directed the committee to continue the process of modeling additional streams.

John Lazares, Educational Services Center Superintendent, was present along with Kim Sellers, Coordinated Care Supervisor, and Kevin Stevens, Clinical Committee Coordinator, to present an update to the board relative to the Coordinated Care/Diversion Program.

Mr. Stevens presented the pooled fund fiscal years 2013+ financial information (attached) and stated that we are seeing an increase in placements.

Ms. Sellers presented statistics relative to number of referrals (attached) and stated that we are already at 30% of last year's referral number. She then stated that 2013 is the biggest "eye opener" in the 16 years she has been working with this program. She also stated that the age of the offender is becoming younger and younger.

Upon motion the meeting was adjourned.



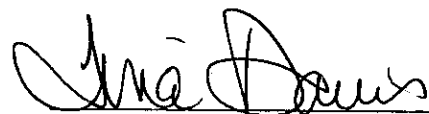
Tom Ariss, President



Pat Arnold South

David G. Young

I hereby certify that the foregoing is a true and correct copy of the minutes of the meeting of the Board of County Commissioners held on March 26, 2013, in compliance with Section 121.22 O.R.C.



Tina Davis, Clerk
Board of County Commissioners
Warren County, Ohio

Sinclair Courseview Campus Center Update for the Warren County Commissioners



March 26, 2013



SINCLAIR
COMMUNITY COLLEGE



SINCLAIR
COMMUNITY COLLEGE

Core Strategies





Barney Wright, Chair

Sinclair College Board of Trustees



Amy Barker



Ron Budzik



Richard Chernesky



Rob Connelly



Dannetta Graves



Helen Jones-Kelley



Paula MacIlwaine



Dan Sadlier



Beth Whelley





Dr. Steven Johnson
President & CEO

President Johnson's Senior Administration



Mitchell Bailey
Chief of Staff



Jeff Boudouris
Vice President and
Chief Financial Officer



Michael Carter
Superintendent of School
& Community Partnerships



Dr. Annesa Cheek
Chief Student Financial
Services Officer



Dr. Kathleen Cleary
Associate Provost



Dr. Dave Collins
Interim Senior Vice
President and Provost



Dr. Anthony Cruz
Vice President for
Enrollment Management &
Student Affairs



Dr. Mary Gaier
Vice President for
Organizational
Development



Madeline Isell
Vice President for
Advancement



Dr. Scott Markland
Vice President of Regional
Centers



Deb Norris
Vice President for
Workforce Development &
Corporate Services



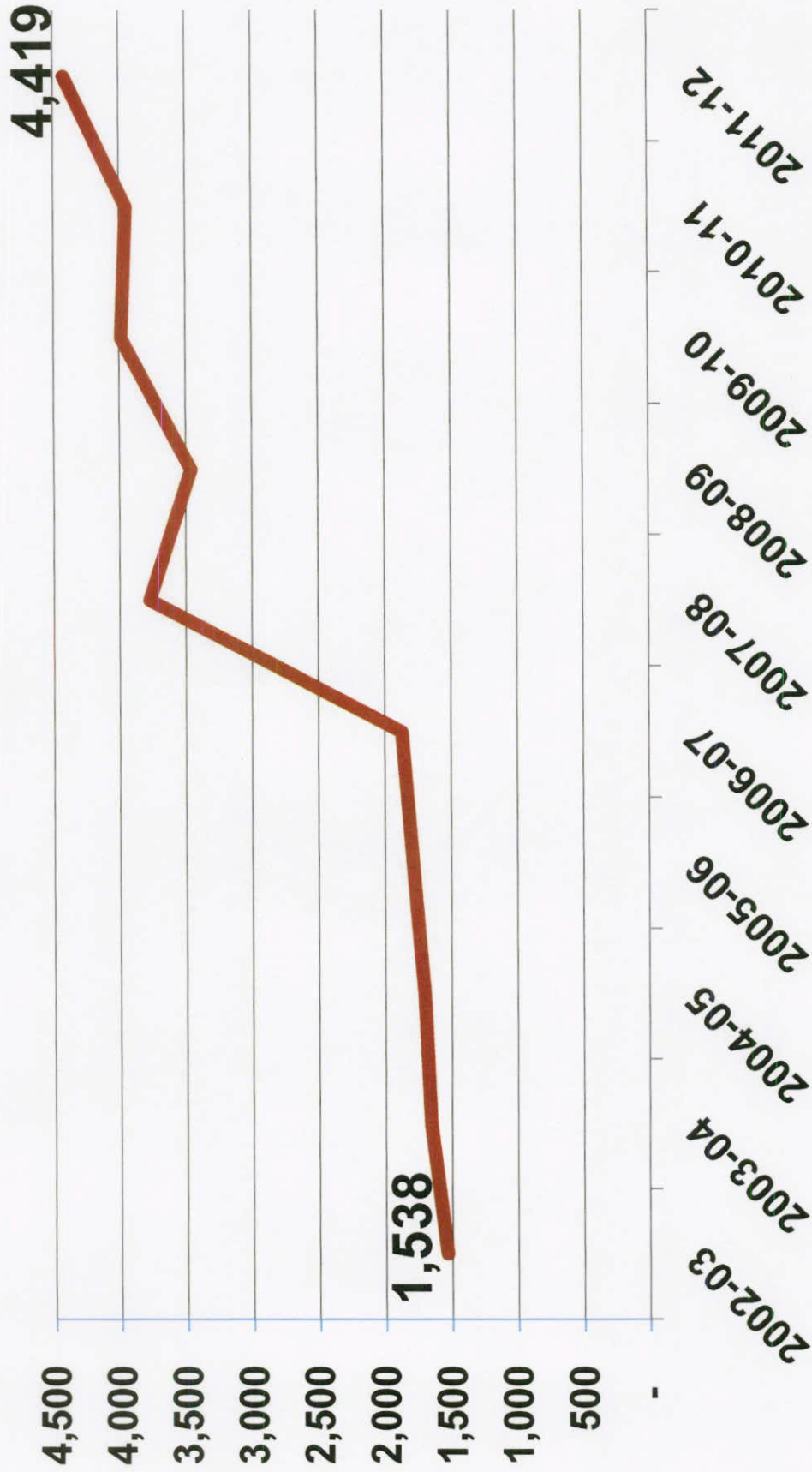
Dr. Ty Stone
Vice President for Business
Operations



SINCLAIR
COMMUNITY COLLEGE

Sinclair's Student Completion Trend

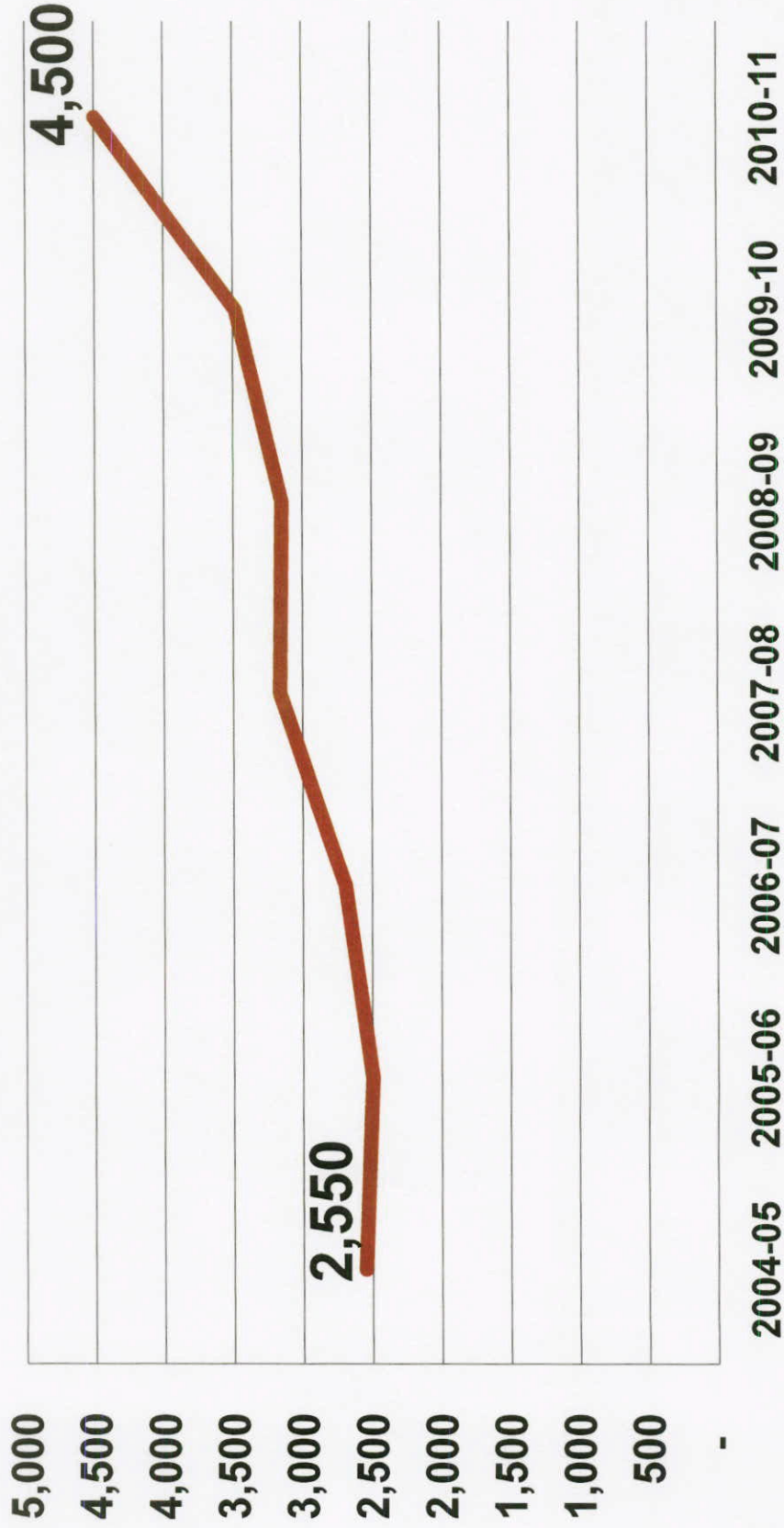
Number of Degrees and Certificates Awarded
(per Academic Year)



Sinclair's Student Transfer to University Trend

Number of Transfer Students

(per academic year)



SINCLAIR
COMMUNITY COLLEGE

Number of Sinclair Students By County

Home County	Headcount	%
Montgomery	23,011	59%
Greene	3,930	10%
Warren	2,602	7%
Miami	1,512	4%
Butler	1,454	4%
Preble	1,008	3%
Clark	992	3%
Darke	474	1%
Other	3,879	10%

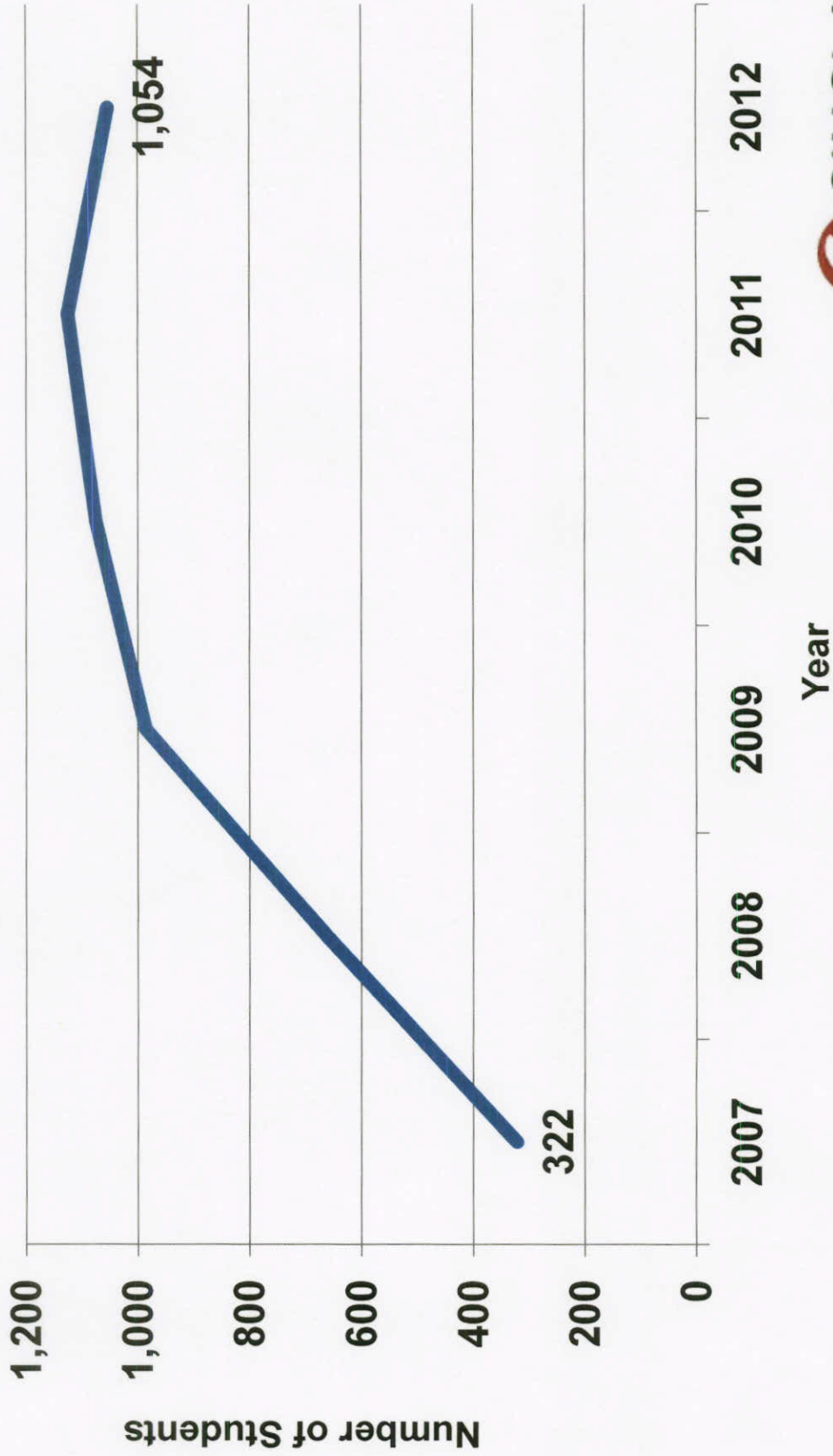


Sinclair Courseview Campus Center

Fast Facts

- 1,054** Fall 2012 Courseview Enrollment
- 217%** Enrollment growth from 2007 to 2012
- 31** Number of degree and certificate programs offered at Courseview
- 471** Courseview graduates since 2007

Sinclair Courseview Campus Center Total Fall Headcount Enrollment



Top Warren County Feeder High Schools

2012 Graduating Class Attending all Sinclair Sites

By Percentage		
Rank	High School	% of Graduating Class*
1	Carlisle High School	23
2	Waynesville High School	16
3	Springboro High School	13
4	Lebanon High School	12
5	Franklin High School	8
6	Little Miami High School	7
7	Kings High School	5
8	Mason High School	3

By Number		
Rank	High School	# of Graduates Enrolled**
1	Lebanon High School	74
2	Springboro High School	72
3	Little Miami High School	45
4	Carlisle High School	44
5	Waynesville High School	35
6	Mason High School	29
7	Franklin High School	28
8	Kings High School	14

*Based on last available class size data

**Duplicated enrollment across 2012 summer, 2012 fall, and 2013 spring terms.

**Property Owned by Sinclair College or the
Sinclair Foundation in the Courseview Area**
(approximately 70 acres)



Sinclair College Warren County master plan: phased implementation



SINCLAIR
COMMUNITY COLLEGE

125 YEARS 1887-2012

SINCLAIR
courseview campus
vision 2035

Phase I

- Current Courseview building
- 1,400 students
- 1 building
- 18,000 sq ft

Phase II

- 1,400 - 2,000 students
- 2 buildings (cumulative)
- 35,000 sq ft (cumulative)

Phase III

- 2,000 - 4,000 students
- 3 buildings (cumulative)
- 125,000 - 145,000 sq ft (cumulative)

Phase IV

- 4,000 - 6,000 students
- 5 buildings (cumulative)
- 265,000 - 325,000 sq ft (cumulative)

Phase V

- 6,000 - 8,000 students
- 6 buildings (cumulative)
- 385,000 - 465,000 sq ft (cumulative)

Phase VI

- 8,000 - 10,000 students
- 8 - 10 buildings (cumulative)
- 485,000 - 615,000 sq ft (cumulative)



Courseview Building A



Courseview Building B Current State



COURSEVIEW BUILDING B EXPANSION - VIEW 1
JANUARY 21, 2013





Courseview Building B Demolition Phase

Sinclair Foundation

Courseview Campus Center Campaign

- Goal: \$2.25 million
 - \$1.75 million to support Building B renovation
 - \$500,000 for scholarships and programs
- Timeframe: Spring – Fall 2013
- Results To-Date
 - Recruiting campaign leadership
 - \$250,000 *Completion by Design* grant from the Bill & Melinda Gates Foundation



Warren Commissioners' Scholarships

- Memoranda of Understanding (2008 – 2011, 2012)
- Warren County Port Authority funding
- Terms:
 - \$100 to students taking >12 credit hours (full-time)
 - \$50 to students taking <12 credit hours (part-time)

Warren Commissioners' Scholarship

\$321,545 Amount awarded since
2007

4,432 Number of scholarships
awarded since 2007

Thank You!

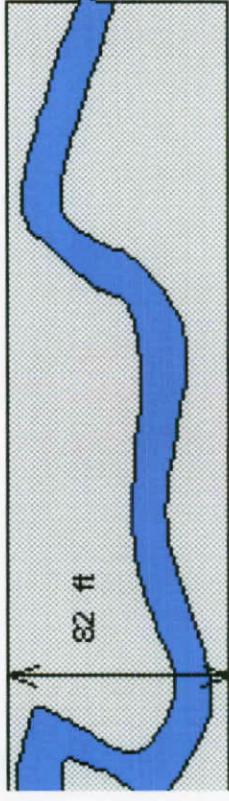


The Streamway Model on First Creek in Harlan Township

2006 ODNR Standards Manual

- Proposed a new setback design.
- Based on “natural stream processes” or the dynamic equilibrium theory rooted in stream geomorphology science.
- Assumes that the overall integrity and health of a stream system can be achieved only when the natural stream processes are undisturbed.

- ODNR derived a streamway width formula based empirical on equation
 - which relates meander beltwidth with the bankfull width
 - correlated bankfull width to drainage area based on the regional curve for rivers in the eastern USA



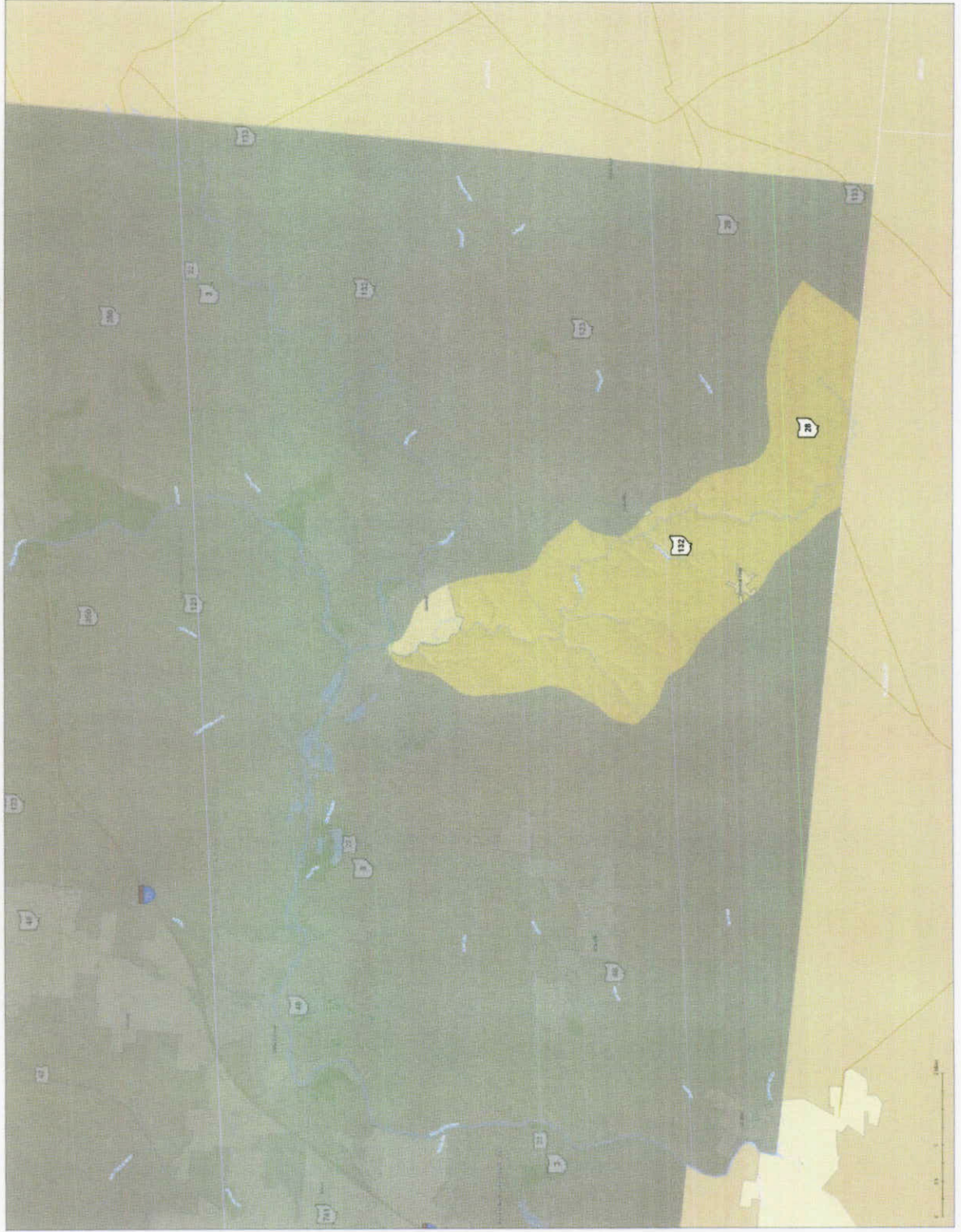
- $Sw = 120 DA^{0.43} (2)$
 - Where DA- Drainage area (sq.mi.)
 - Sw- Streamway width (ft)
- Tested on 6 Ohio stream reaches for reliability

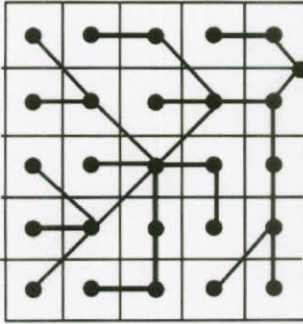
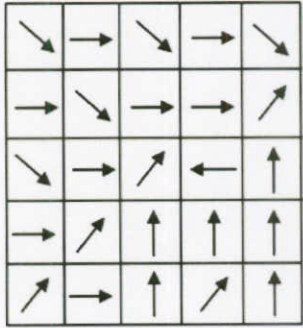
Committee asked if GIS could perform the calculations

- OSU's Ming Sheng's thesis outlined a repeatable GIS model that required 3 elements:
 - Standard GIS software owned by the County
 - High level GIS spatial analysis tools (Arc Hydro Tools v2.0) offered free to the County by our GIS vendor
 - Highly accurate Digital Elevation Model owned by the County

Study Area

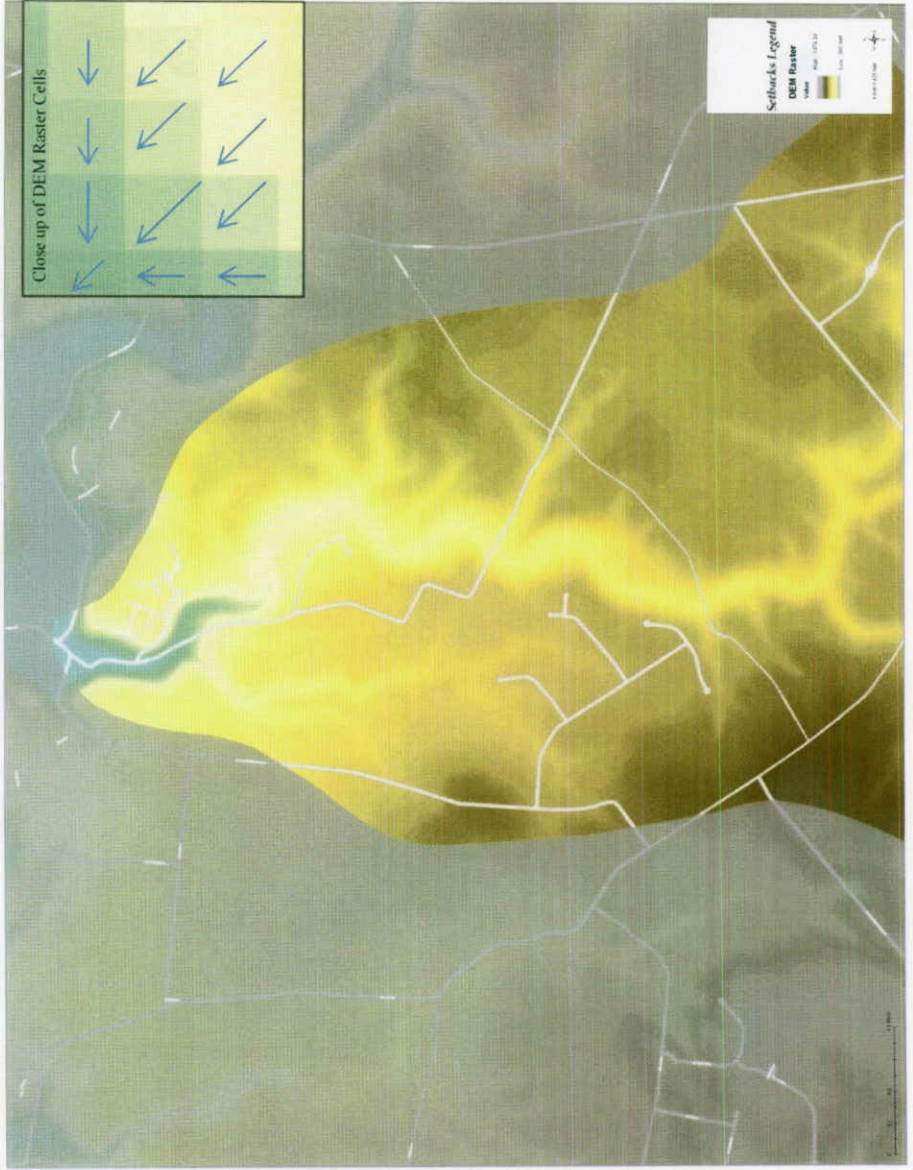
First Creek Watershed: Harlan and Salem Townships and Village of Morrow






0	0	0	0	0
0	2	0	2	0
1	2	13	0	1
0	0	1	17	0
0	2	3	21	1

Digital Elevation Model within First Creek Watershed



Model Results

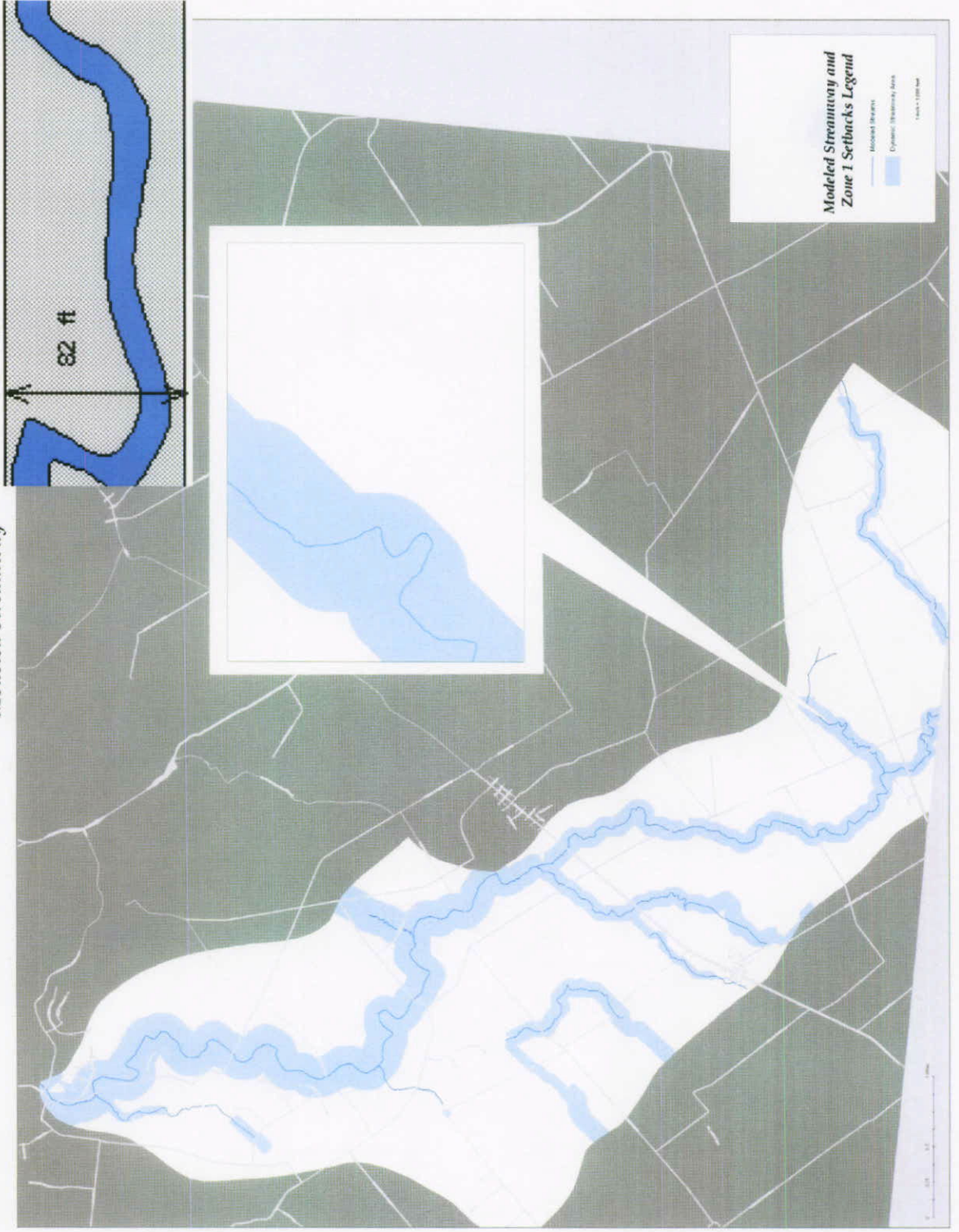
- Streamway centerline 
- Drainage area points on streamway centerline for every 10% increase in contribution area



- Associated Streamway width and location per stream centerline segment based on drainage area contribution and DEM

Model Results in First Creek

Modeled Streamway

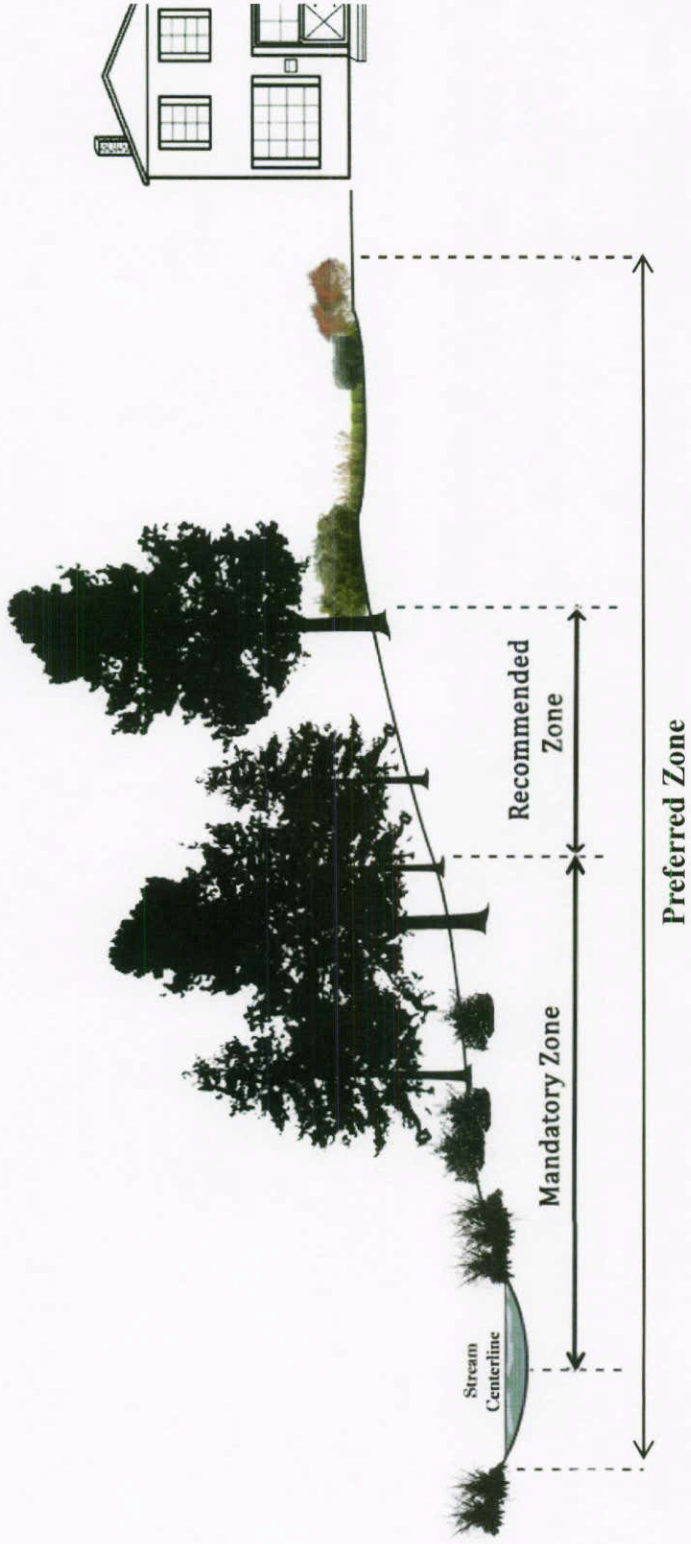


Stream Setback

Sub-committee Determination

- Use the GIS model's break points to determine watershed drainage areas
- Apply a standard setback for five drainage area groups
- Establish 3 Zones within each five drainage area groups

Setback Zone Concept



Zones and Drainage Areas

Drainage Area	<.5 sq mi	0.5-20 sq mi	20-150 sq mi	150-300 sq mi	>300 sq mi
Zone 1 (Mandatory)	30'	45'	60'	120'	180'
Zone 2 (Recommended)	50'	75'	100'	200'	300'
Zone 3 (Preferred)	Model Results	Model Results	Model Results	Model Results	Model Results

Committee Questions for GIS

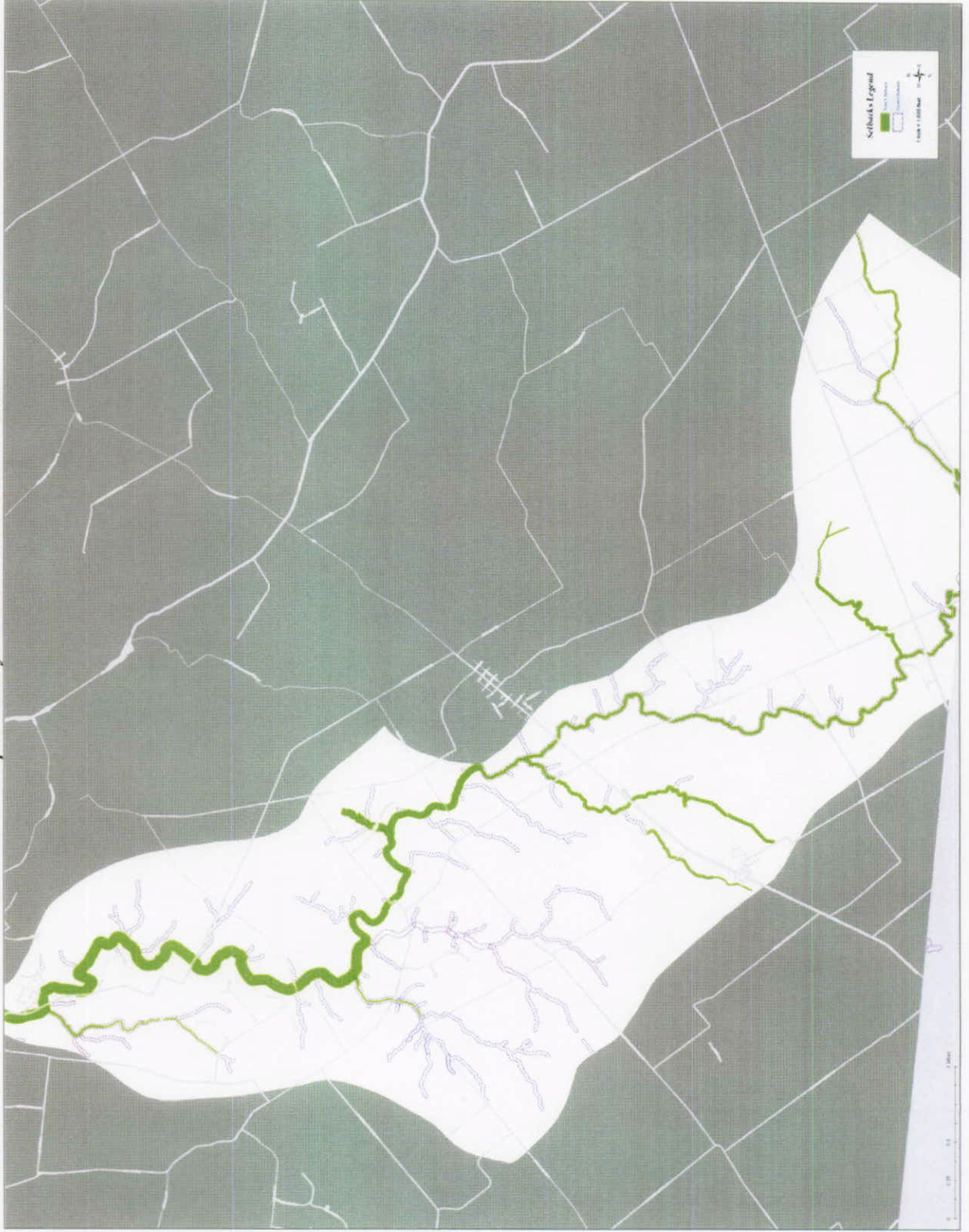
- Compare the Current and the Zone 1 setbacks
- Which properties are affected by each setback?
 - Which properties are vacant?
 - Where are significantly impacted properties (more than 20% of parcel area within Zone 1)?

GIS found for this watershed...

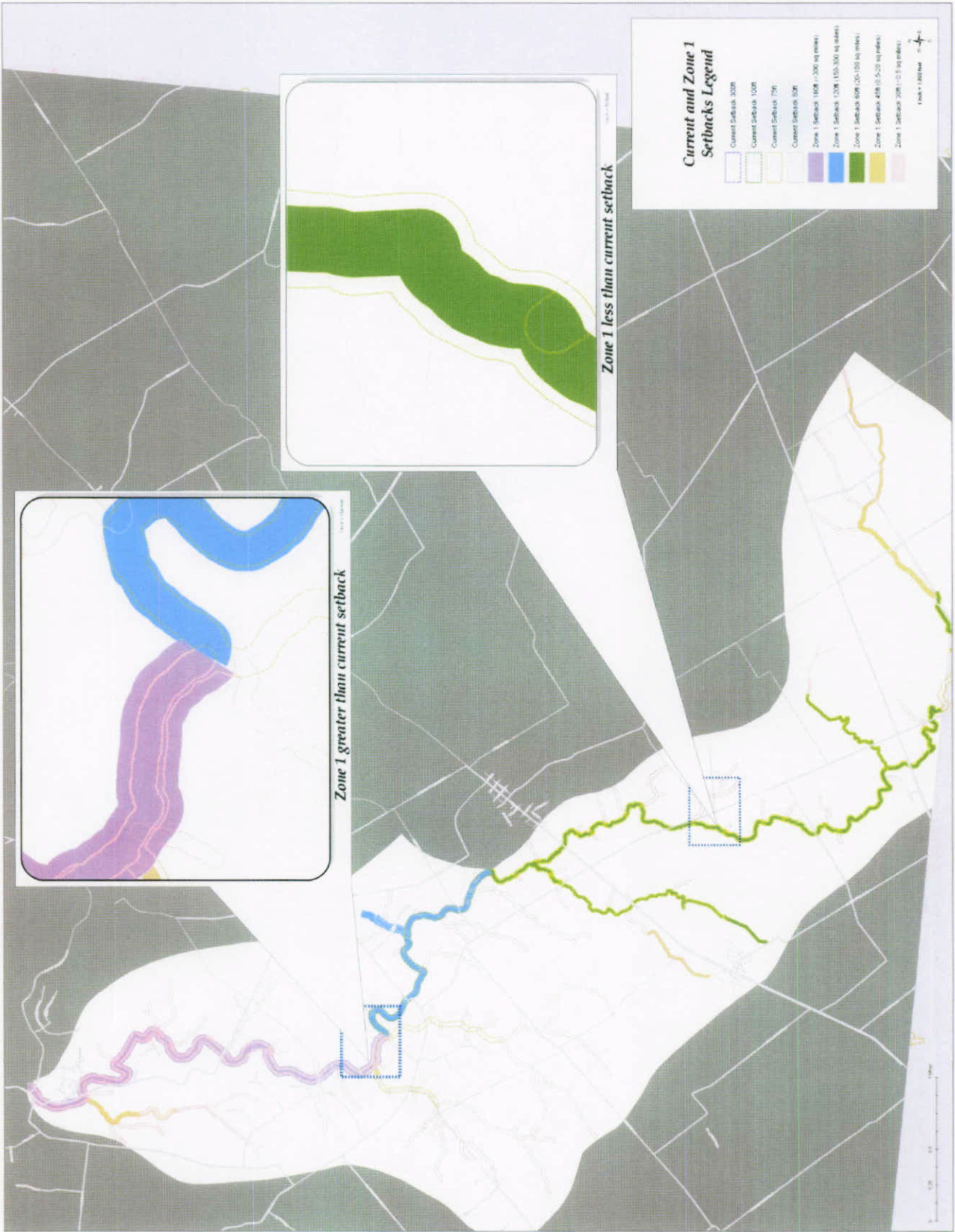
- Zone 1 is less intrusive in the upper watershed, but more so in the lower watershed.
 - The model assigned different drainage area accumulation points.

Current v. Zone 1 Setbacks

Comparison of Current Setback and Zone 1



Current and Zone 1 Setback Comparison



GIS found for this watershed...

- Zone 1 is less intrusive in the upper watershed, but more so in the lower watershed.
 - The model assigned different drainage area accumulation points.
- Zone 1 affects fewer parcels in this watershed.
 - The model ignores some headwater streams.

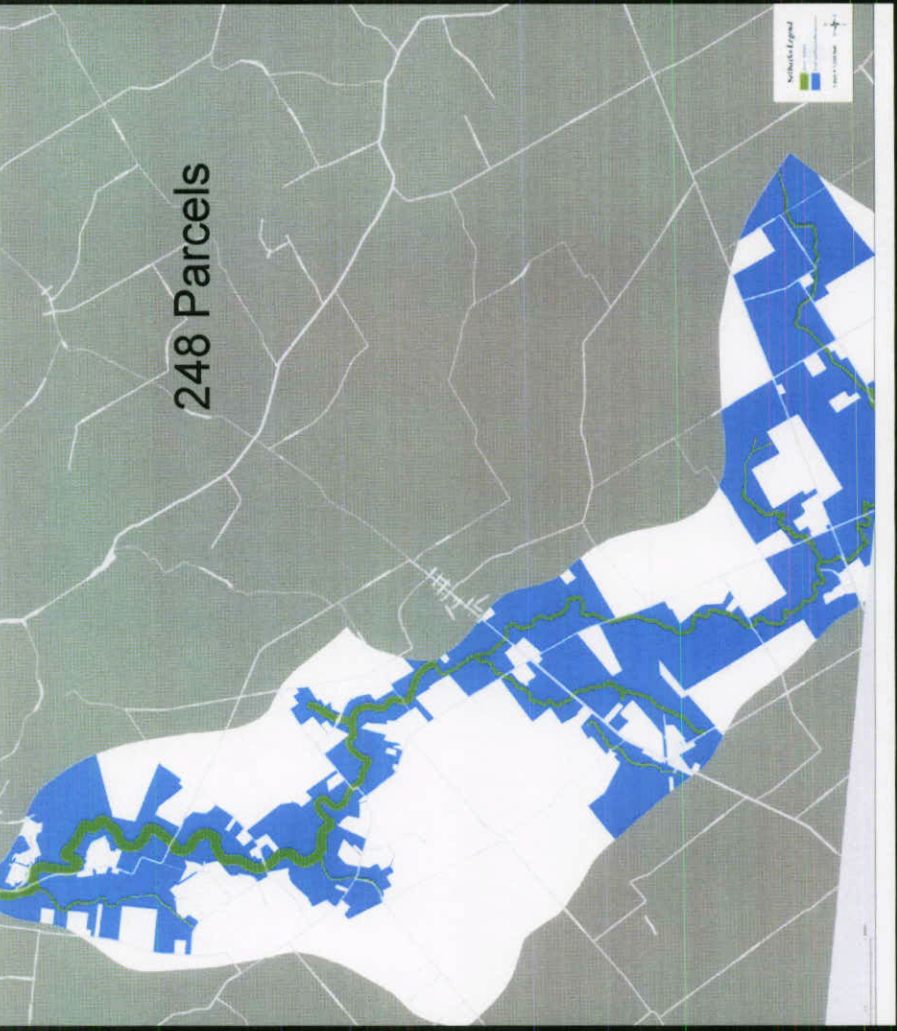
Compare Affected Parcels

428 Parcels Affected by Current Setback in First Creek Watershed



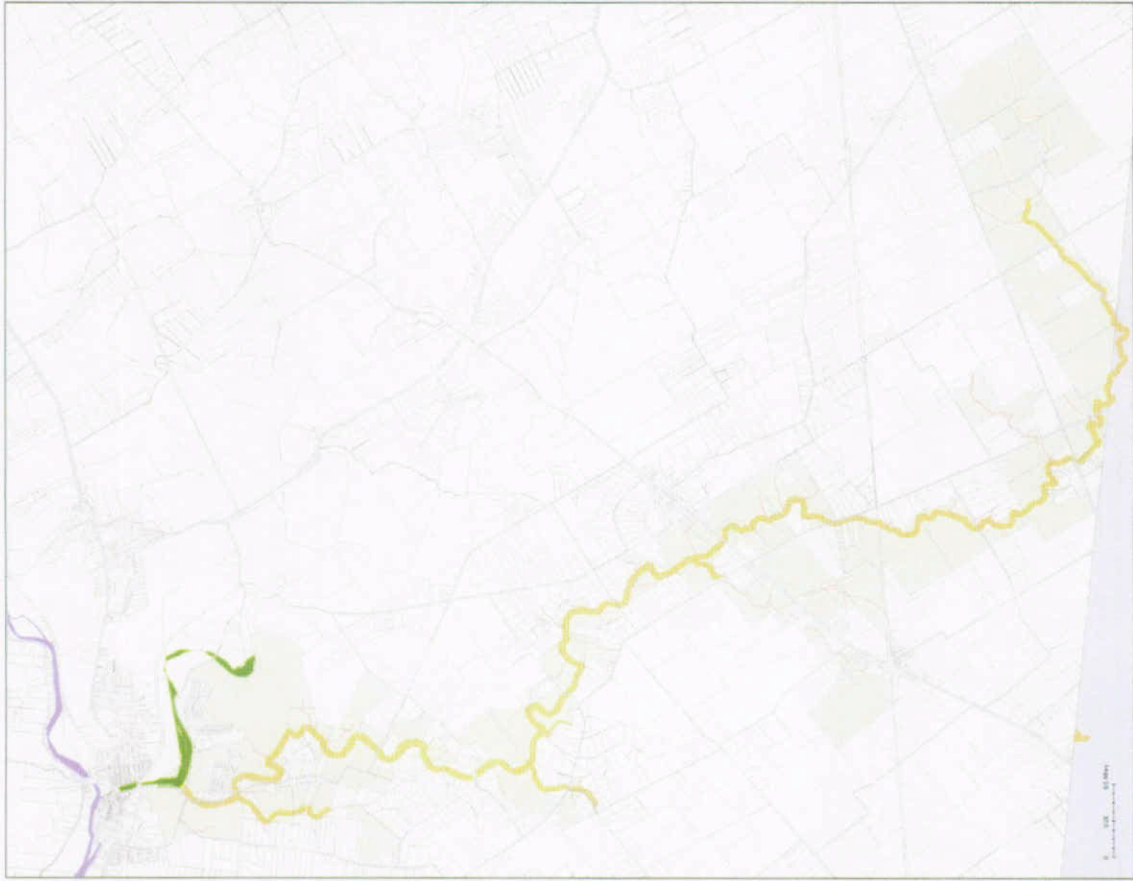
428 Parcels

248 Parcels Affected by Proposed Zone 1 Setback in First Creek Watershed



248 Parcels

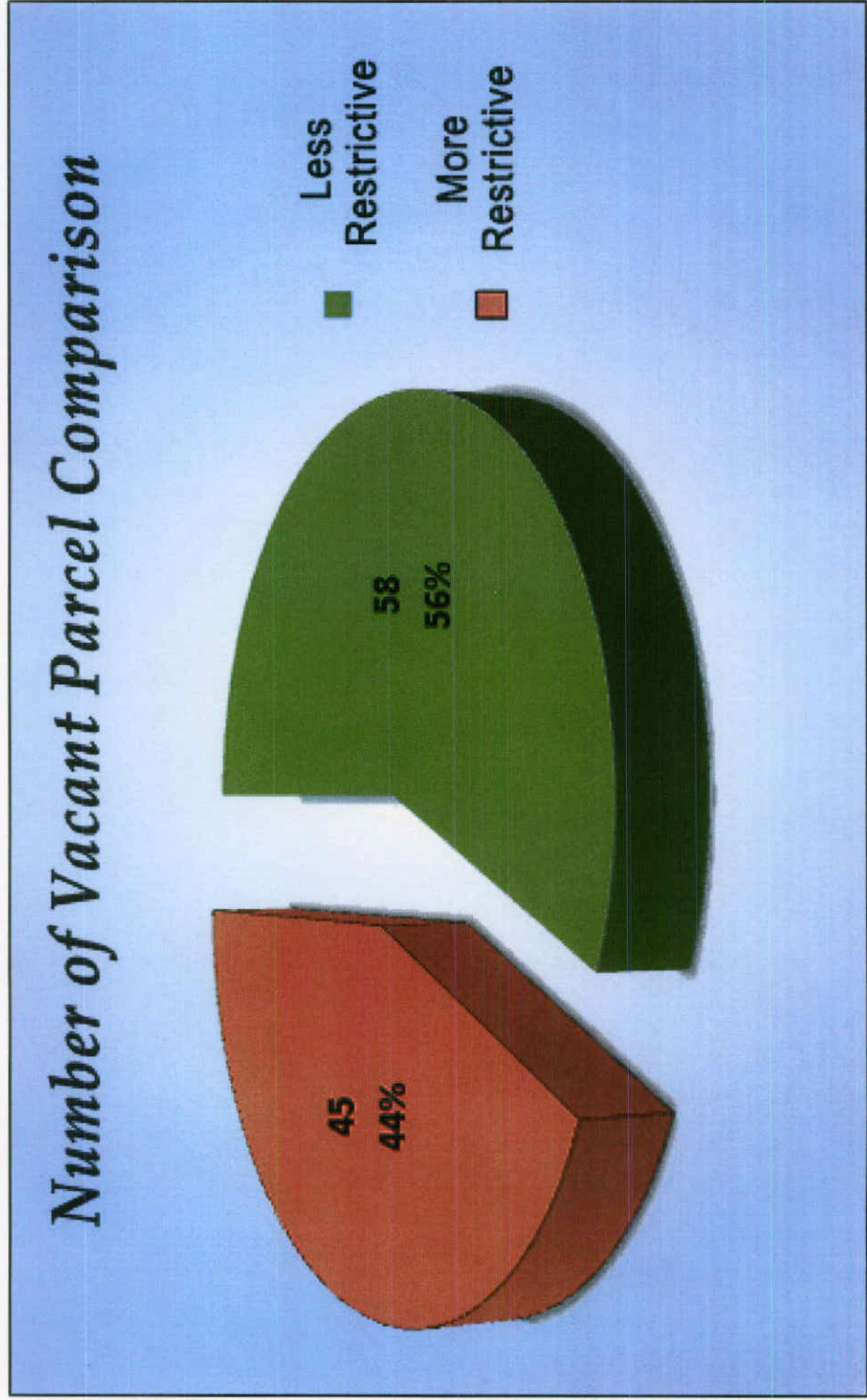
Current Setbacks in the First Creek Watershed and Affected Vacant Parcels



Zone 1 Setbacks in the First Creek Watershed and Affected Vacant Parcels



Zone 1 Affect on Vacant Parcels



Zone 1 Intersection with Vacant Parcels

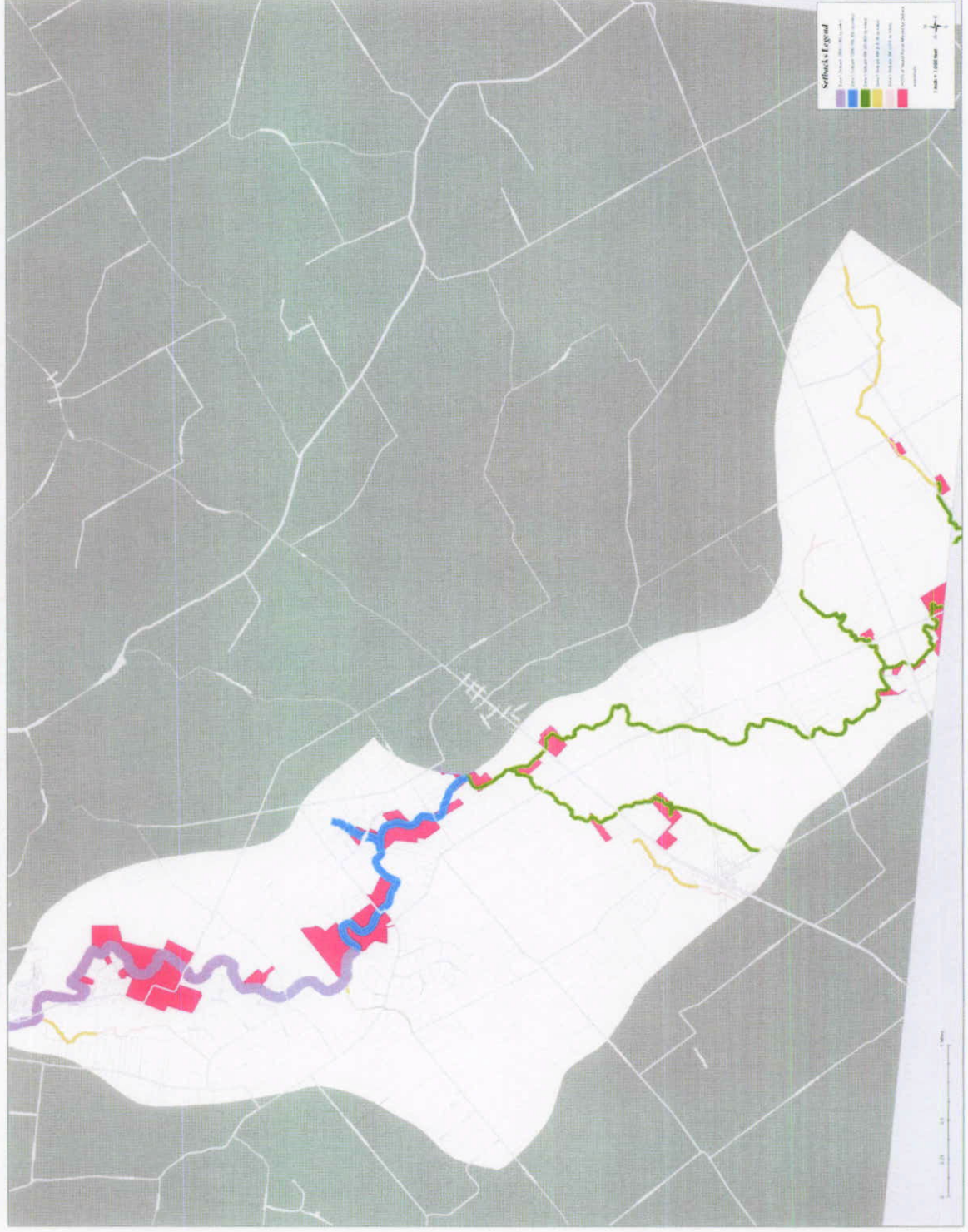


GIS found for this watershed...

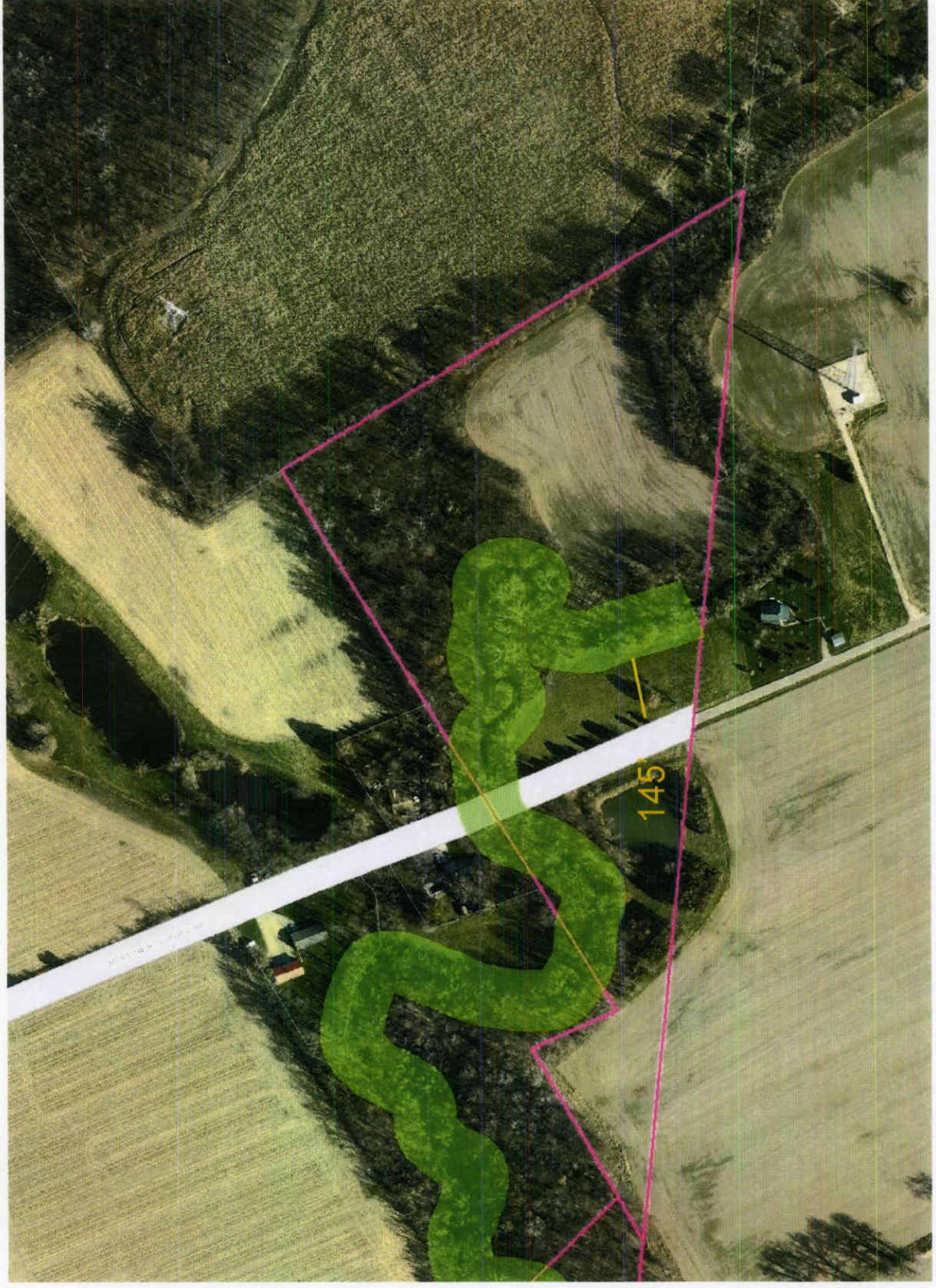
- Zone 1 is less intrusive in the upper watershed, but more so in the lower watershed.
 - The model assigned different drainage area accumulation points.
- Zone 1 affects fewer parcels in this watershed.
 - The model ignores some headwater streams.
- **Zone 1 significantly overlaps some properties.**
 - All that were “buildable” are still “buildable”.

Identify Significantly Impacted Vacant Parcels

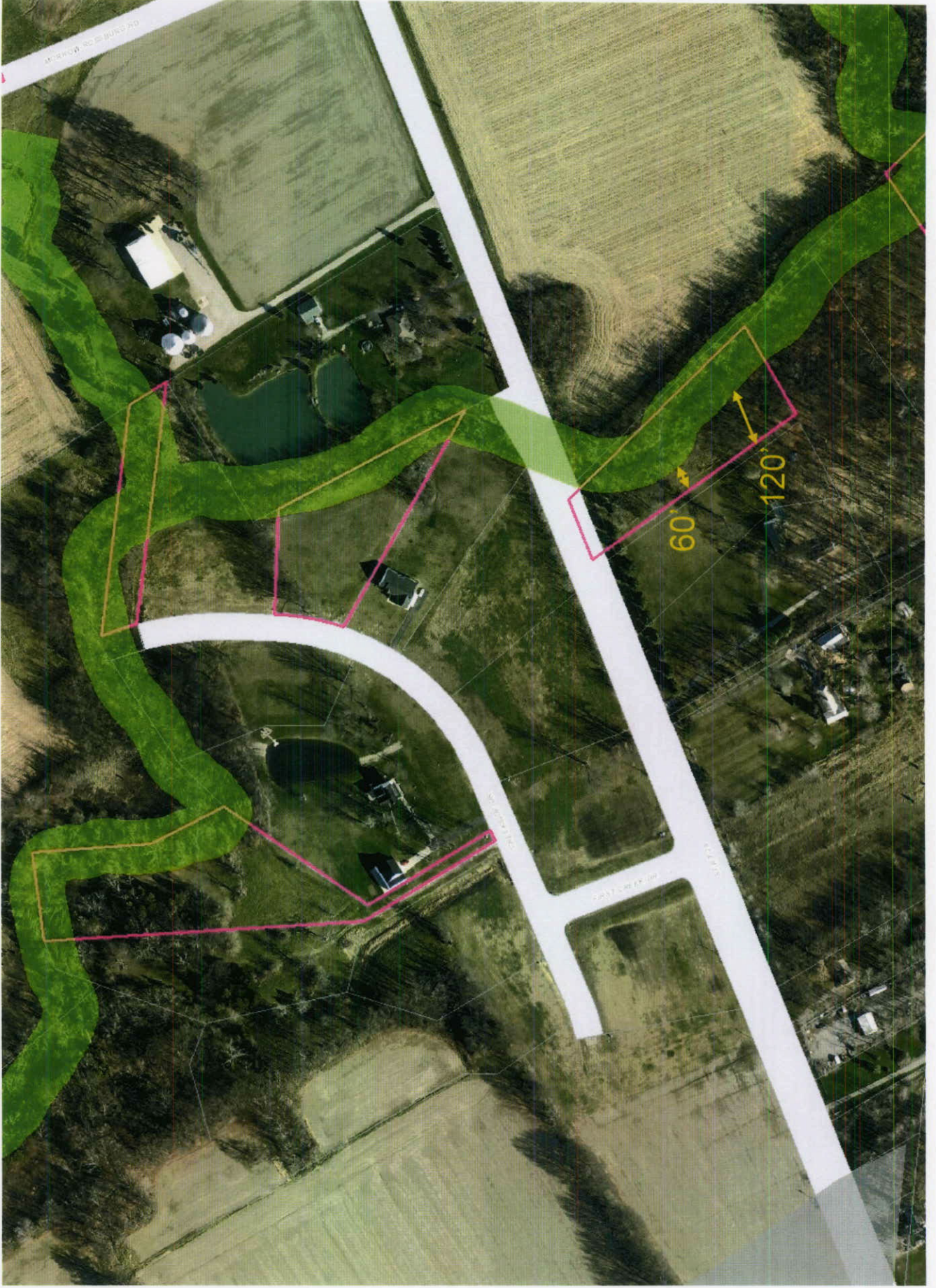
34 Parcels where Zone 1 Setback Affects 20% or more of the Parcel Area



Significantly Impacted Vacant Parcel



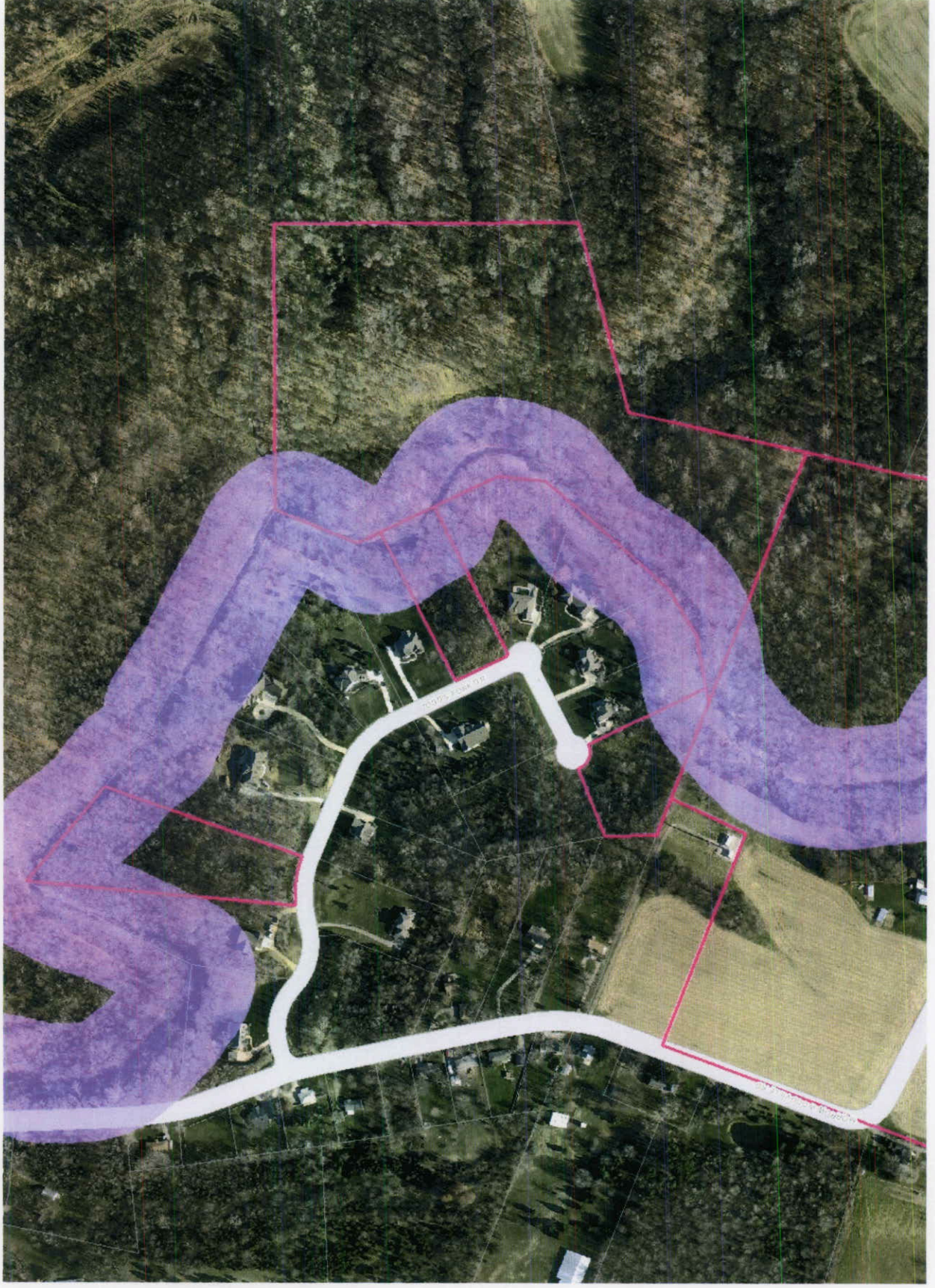
Significantly Impacted Vacant Parcel



Significantly Impacted Vacant Parcel



Significantly Impacted Vacant Parcel



References

- Djokic, D. 2008. *Comprehensive terrain preprocessing using arc hydro tools*. Redland, CA: ESRI.
- Djokic, D., Z. Ye, and C. Dartiguenave. 2011. *Arc hydro tools overview*. Redland, CA: ESRI.
- *Franklin County Zoning Resolution, (2008): 650, <http://www.franklincountyohio.gov/commissioners/edp/planning/streamsetbacks/StreamSetbackRegulation-Approved.pdf>*.
- Garbrecht, J., and L. Martz. 2000. Digital elevation model issues in water resources modeling. In *Hydrologic and hydraulic modeling support : With geographic information systems.*, eds. D. Maidment, D. Djokic, 1. Redland, CA: ESRI.
- Gordon, S. I., and Simpson, J. W. 1994 *Maintaining and improving water quality in the Big Darby Creek Watershed: agricultural and urban nonpoint water pollution*. Columbus, OH: Department of City and Regional Planning, Department of Landscape Architecture, The Ohio State University.
- Lee, Philip, Cheryl Smyth, and Stan Boutin. 2004. Quantitative review of riparian buffer width guidelines from Canada and the United States. *Journal of Environmental Management* 70 (2) (2): 165-80.
- Maidment, David R. 2002. *Arc hydro :GIS for water resources*. Redlands, Calif: ESRI Press.
- Mathews, J. 2006. Post-construction storm water practice. In *Rainwater and land development: Ohio's standards for stormwater management, land development and urban stream protection*. 3rd ed. Columbus, OH: Ohio Department of Natural Resources (ODNR). 54

- Mayer, P. M., S. K. Reynolds, M. D. McCutchen, and T. J. Canfield. 2005. Riparian buffer width, vegetative cover, and nitrogen removal effectiveness: A review of current science and regulations. *Environmental Protection* 22 (EPA/600/R-05/118).
- McCuen, Richard H. 1989. *Hydrologic analysis and design. 2nd ed. Upper Saddle River, N.J.: Prentice Hall.*
- NOACA(Northeast Ohio Areawide Coordinating Agency). Principle of riparian zone protection. 2009 [cited 6/14 2012]. Available from http://www.noaca.org/storm_water.html.
- Olivera, F., J. Furnans, D. Maidment, D. Djokic, and Z. Ye. 2002. Drainage systems. In *Arc hydro: GIS for water resources. Redland, CA: ESRI.*
- Patti Banks Associates, and Inc Applied Ecological Services. 2006. *Stream corridor protection and adaptive management manual.*
- Schwartz, S. 2006. *Riparian setbacks: Technical information for decision makers. Cleveland, Ohio: Chagrin River Watershed Partners, Inc., .*
- Sheng, Ming 2012. *Sizing Stream Setback Using GIS Tools for Stream Protection. Columbus, Ohio: The Ohio State University, Graduate School Thesis.*
- Tarboton, D., and D. P. Ames. 2001. *Advances in the mapping of flow networks from digital elevation data. Orlando, FL: World Water and Environmental Resources Congress.*
- U.S. EPA. Model ordinances to protect local resources. <http://www.epa.gov/owow/NPS/ordinance/mol1.htm>. Accessed on Jul 24, 2012
- Walter, M., J. Archibald, B. Buchanan, H. Dahlke, Z. Easton, R. Marjerison, A. Sharma, and S. Shaw. 2009. New paradigm for sizing buffer to reduce risks of polluted stormwater: Practical synthesis. *Journal of Irrigation and Drainage Engineering* 135 (No. 2, March/April): 200-9.
- Ward, A., J. D'Ambrosio, J. Witter, A. Jayakaran, and D. Mecklenburg. 2009. *Floodplains and streamway setbacks. the ohio state university extension factsheet AEX-445-02. Columbus, Ohio:*

Pooled Fund Fiscal Year 2013 +

	Revenue	Expenses	Ending Fund Balance
Fund Balance 06-30-12			\$331,216.91
Jul-12	\$88,507.03	\$17,487.73	\$402,236.21
Aug-12	\$33,744.56	\$22,244.61	\$413,736.16
Sep-12	\$1,450.32	\$29,185.22	\$386,001.26
Oct-12	\$75,084.70	\$24,516.40	\$436,569.56
Nov-12	\$26,137.41	\$15,837.70	\$446,869.27
Dec-12	\$25,644.24	\$13,876.90	\$458,636.61
Jan-12	\$40,995.88	\$36,251.03	\$463,381.46
Feb-12	\$50,020.43	\$0.00	<u>\$513,401.89</u>
Mar-12			
Apr-12			
May-12			
Jun-12			
	\$341,584.57	\$159,399.59	\$182,184.98

Revenue Detail - FY 2013

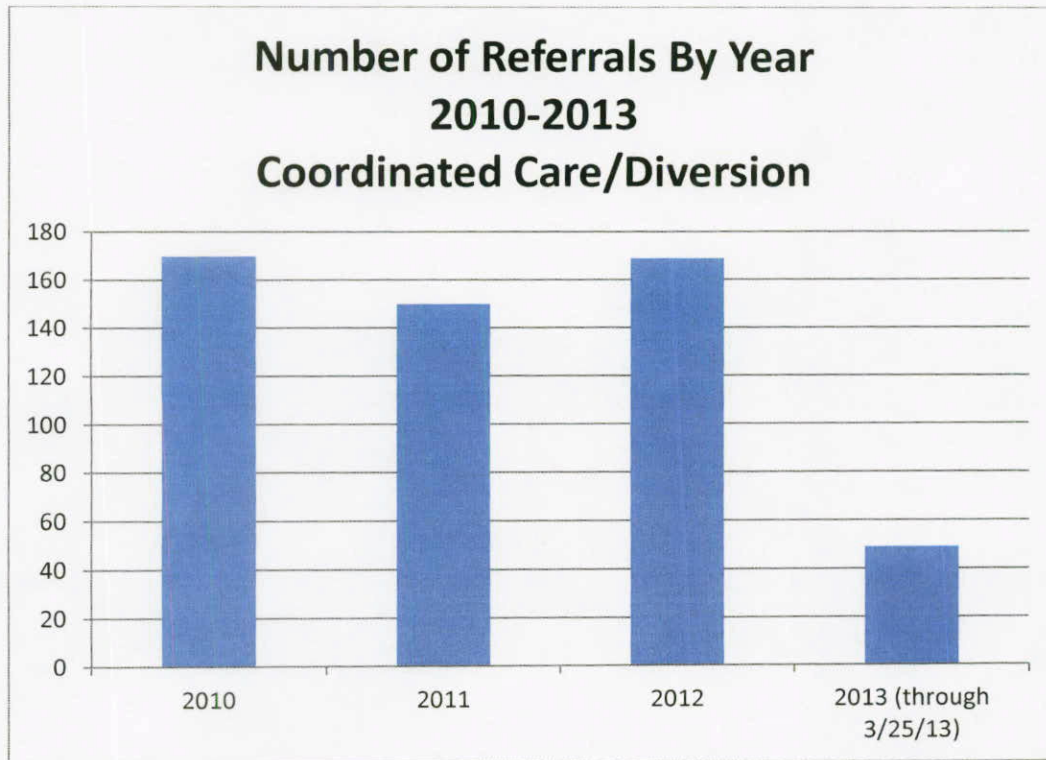
Child Support	\$ 5,190.59
Pooled Funding MHRS	\$ 75,000.00
Juvenile Court	\$ 75,000.00
Reimbursements	\$ 36,393.98
DD	\$ 75,000.00
Children's Services	\$ 75,000.00
	\$ 341,584.57

<u>Expense Detail</u>	Total Fiscal Year Allocation	
Child Placement Services Line	\$146,899.59	\$410,000.00
Purchased Services	\$12,500.00	\$30,000.00
	\$159,399.59	\$440,000.00

**The current balance as of 02/28/2013 is \$513,401.89. That is \$145,662.67 more than last year at this time.

**Potential invoices still unpaid for FY 2012 and FY 2013. This could result in adjustment in data reported.

Coordinated Care/Diversion 2013 Highlights/Trends



- Currently at 29% of volume of last year's TOTAL referrals, however there is a significant increase in the **severity** of cases, younger ages of kids (i.e. recent Duty to Warn)
- Increase in parents wanting placement
- Increase in the word "violent" when referring youth (correlation with Sandy Hook?)
- Increase in arrest of SED/ASD Spectrum youth/Increase in aggression and DV
- More stringent screening of referrals (i.e. referring to Mental Health or our Parent Success program)
- Kids being referred at a much younger age (i.e. kindergarteners)